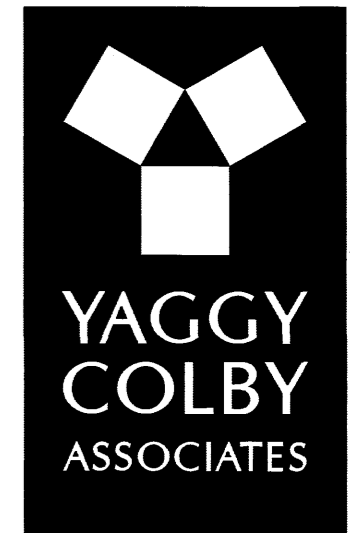
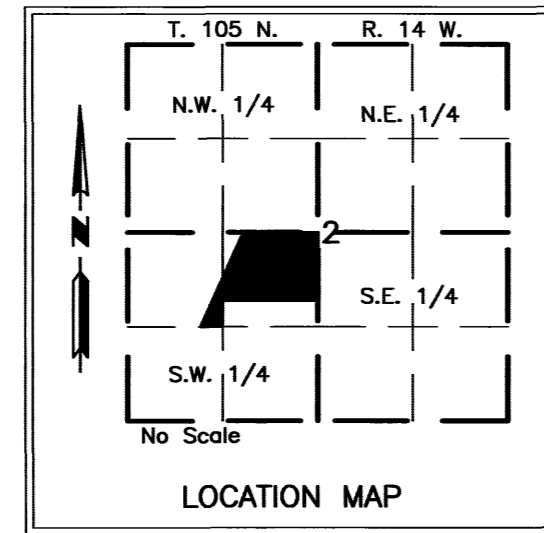
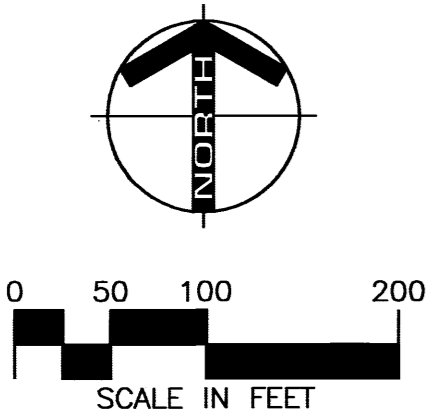


TYROL HILLS FIRST SUBDIVISION



ENGINEERS • ARCHITECTS
SURVEYORS • PLANNERS
LANDSCAPE ARCHITECTS
717 THIRD AVENUE SOUTHEAST
ROCHESTER, MINNESOTA 55904
507-288-6464
FAX 507-288-5058
EMAIL INFO@YAGGY.COM



- MONUMENTS**
- Set 1/2" Rebars
 - Set 3/4" Iron Pipes
 - Found Monuments (Pipe, Rod, Etc.)
- All monuments set have a plastic cap stamped L.S. 41887.

BEARINGS

Plot bearings are Minnesota State Plane Grid Azimuths measured to the right from grid north.

UTILITY EASEMENT DEFINED

An unobstructed easement for the construction and maintenance of all necessary overhead, underground or surface public utilities, including rights to conduct drainage and trimming on said easement.

U.E. = UTILITY EASEMENT

DRAINAGE EASEMENT DEFINED

An unobstructed easement for the construction and maintenance of underground and surface drainage facilities and utility easement.

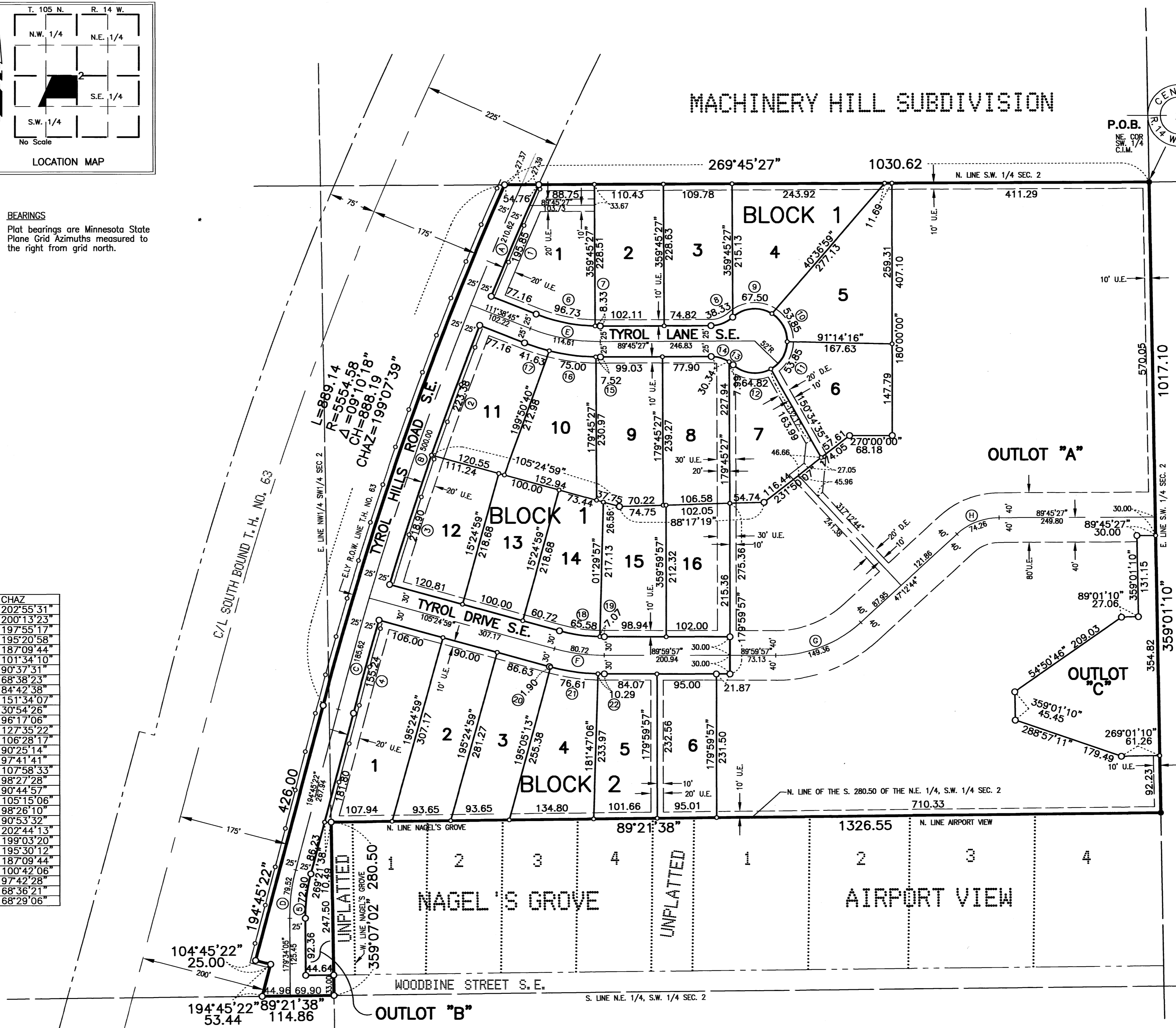
D.E. = DRAINAGE EASEMENT

CONTROLLED ACCESS DEFINED

Ingress and egress to, from or across the abutting roadway is restricted by the road authority pursuant to Minnesota State Statute 160.08.

○ = CONTROLLED ACCESS

CURVE	LENGTH	DELTA	RADIUS	CHORD	CHAZ
1	195.85	02°02'19"	5504.58	195.84	202°55'31"
2	223.38	02°19'30"	5504.58	223.36	200°13'23"
3	218.90	02°16'43"	5504.58	218.89	197°55'17"
4	155.24	01°36'57"	5504.58	155.23	195°20'58"
5	72.90	15°11'17"	275.00	72.68	187°09'44"
6	96.73	20°09'10"	275.00	96.23	101°34'10"
7	8.33	01°44'08"	275.00	8.33	90°37'31"
8	38.33	42°14'09"	52.00	37.47	68°38'23"
9	67.50	74°22'39"	52.00	62.86	84°42'38"
10	53.85	59°20'19"	52.00	51.48	151°34'07"
11	53.85	59°20'19"	52.00	51.48	30°54'26"
12	64.82	71°25'01"	52.00	60.70	96°17'06"
13	7.99	08°48'29"	52.00	7.99	127°35'22"
14	30.34	33°25'40"	52.00	29.91	106°28'17"
15	7.52	01°19'33"	325.00	7.52	90°25'14"
16	75.00	13°13'21"	325.00	74.84	97°41'41"
17	41.63	07°20'24"	325.00	41.61	107°58'33"
18	65.58	13°55'02"	270.00	65.42	98°27'28"
19	7.07	01°30'00"	270.00	7.07	90°44'57"
20	1.90	00°19'46"	330.00	1.90	105°15'06"
21	76.61	13°18'07"	330.00	76.44	98°26'10"
22	10.29	01°47'09"	330.00	10.29	90°53'32"
A	210.62	02°10'57"	5529.58	210.61	202°44'13"
B	500.00	05°10'51"	5529.58	499.83	199°03'20"
C	185.62	01°55'24"	5529.58	185.61	195°30'12"
D	79.52	15°11'17"	300.00	79.29	187°09'44"
E	114.61	21°53'18"	300.00	113.91	100°42'06"
F	80.72	15°25'02"	300.00	80.48	97°42'28"
G	149.36	42°47'13"	200.00	145.91	68°36'21"
H	74.26	42°32'44"	100.00	72.56	68°29'06"



UNPLATTED

1010 B

PROJECT NUMBER 8436
COMPUTER FILE 8436F-PLAT.DWG
DATE 11/23/04
DRAFTSPERSON: JRP